



Northern Rangelands Trust

---

# HALF YEAR REPORT 2020





**We are the Northern Rangelands Trust**



## DEAR FRIENDS,

We find ourselves half way through what is, for many of us, the most extraordinary year we have ever lived through.

The cards seem to have been particularly unlucky for northern Kenya, with a destructive locust invasion that started at the beginning of the year and threatened pasture and crop land. This was followed by very high rainfall, which was a blessing for some but a destructive force for many others – with floods destroying homes and lives.

Then came the coronavirus pandemic.

While we are grateful that COVID-19 cases in northern Kenya, at the time of writing, are not high, it is the economic effect that has hit the conservancies the hardest. Unemployment, a sudden drop in tourism revenue, closures of livestock markets, and the inevitable increase in insecurity that comes as a result of these shocks has tested conservancies in a way they have never been tested before. And yet within this awful pandemic, we have found opportunity. We have found ways to strengthen our communications with each other, and with our donors and partners. We have

seen resilience and collaboration between the conservancies, agility and ingenuity in ways of working, and validation from national government on a whole new level - with the COVID-19 stimulus package for community conservancies.

I'm honoured to have been appointed to the National Conservancies Fund Framework and Implementation Committee, whose mandate will be developing and implementing the structure that will guide the roll-out of this government stimulus package.

I will be joined on the Committee by my friend and colleague, the CEO of the Kenya Wildlife Conservancies Association Dickson Kaelo, and others, and together we will bring our grassroots and community experience to the committee, and champion for their firsthand priorities.

This unprecedented commitment by the Kenyan Government sends a strong message on the nationally-important role of community conservancies. It portrays a strong recognition of the partnership between the national government through the Ministry of Tourism and Wildlife, Kenya Wildlife Service (KWS), community conservancies, and all the community members working tirelessly to conserve and protect wildlife and nature in Kenya. I very much look forward to seeing its impact.

Thank you for your continued interest in, and support of, NRT, stay safe.

Tom Lalampaa,  
CEO NRT



# Meeting the Challenge: Collaboration through COVID-19.



Roshni Lodhia | TNC

---

## Education Through Radio

Kenyan schools have been closed in light of the coronavirus pandemic, and while schools in urban areas are transitioning to online learning, this isn't an option for many students in rural north Kenya, who don't have access to the necessary internet or hardware. That is why teachers from different private and public schools in Isiolo came together in early June to launch an 'education through radio' project, supported by NRT, Isiolo County Government, Isiolo County Parents and Teachers Association and Angaaf Radio. Now, thousands of rural Class Eight and Form Four learners in Isiolo have access a wide variety of lessons via radio at home, six days a week. The education programme has attracted Safaricom, which is looking to provide internet to remote areas in Isiolo to further boost students' access to education.

---

## Community-Funded Scout Outpost

The board members, scouts and community members of Kirimon Community Conservancy came together to build a temporary scout base in April. Kirimon is an important wildlife corridor and there was increasing concern that if spread out, the scouts would be unable to respond effectively to the predicted rise in insecurity and wildlife crime. Given the current economic climate, conservancies are looking to save costs wherever possible, so finding budget for a scout camp was difficult. That is why Kirimon scouts and board members made their own financial donations to the project and contributed to the workforce as well. This inspired two other conservancies to do the same, including Ngare Ndare and Naibunga Upper.

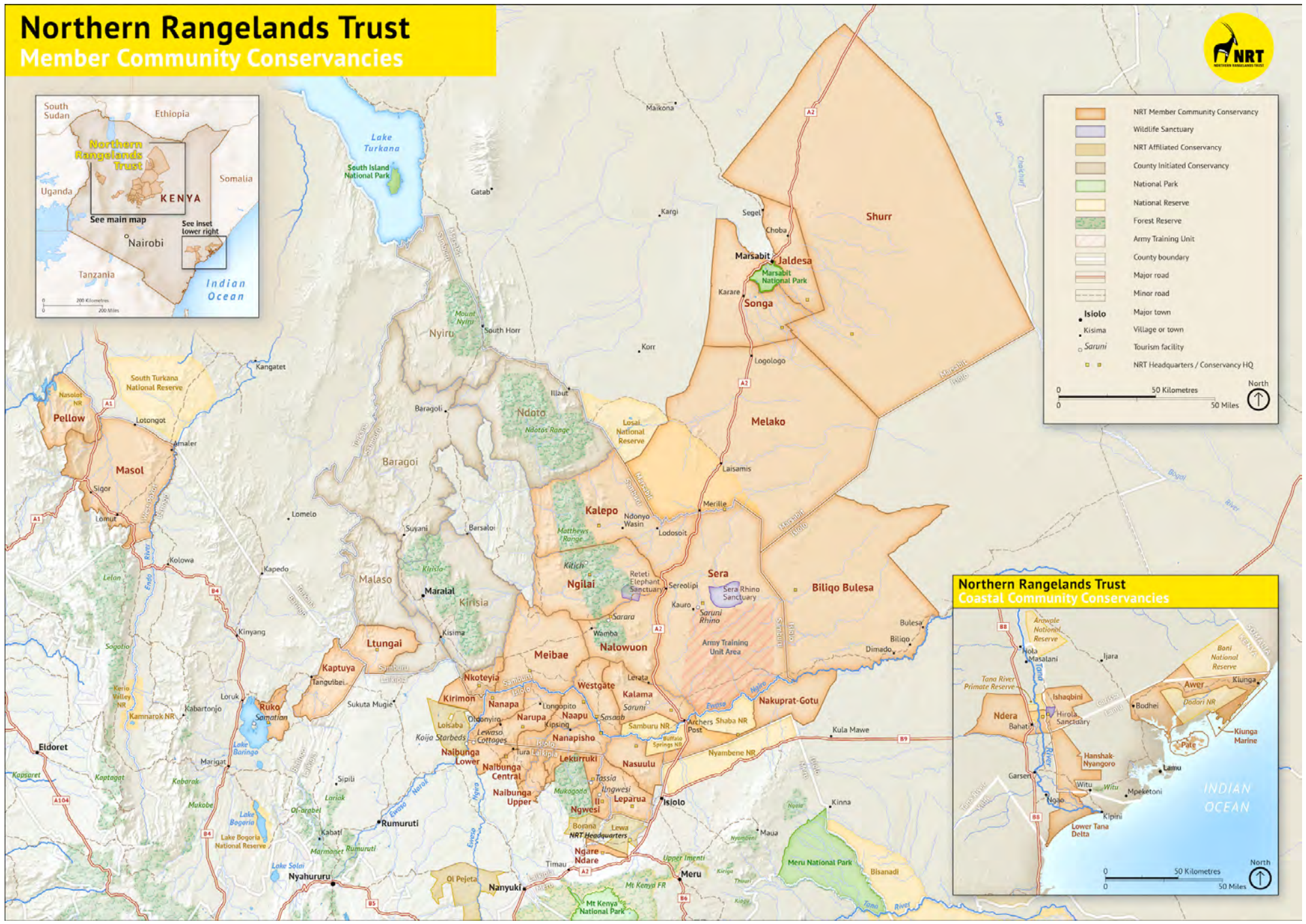
---

## Crisis Support

We are incredibly grateful to our key donors and partners for the support and trust they have shown NRT and our member conservancies during this crisis. Alongside this ongoing support, we would particularly like to thank all our partners that have supported us with funding to enable a specific COVID-19 response which enabled the continuation of important conservancy operations and critical programme activities.



# Northern Rangelands Trust Member Community Conservancies



	NRT Member Community Conservancy
	Wildlife Sanctuary
	NRT Affiliated Conservancy
	County Initiated Conservancy
	National Park
	National Reserve
	Forest Reserve
	Army Training Unit
	County boundary
	Major road
	Minor road
	Isiolo
	Kisima
	Saruni
	NRT Headquarters / Conservancy HQ

0 50 Kilometres 50 Miles

North

## Northern Rangelands Trust Coastal Community Conservancies





## Strengthening Conservancy Governance

Output 1 - Well-governed community conservancies

Output 2 - Supportive Government policies, laws and finance

### Building Peace and Security

Output 3 - Effective peace-building between ethnic communities

Output 4 - Effective community policing in support of Government security agencies

### Livelihoods & Business

Output 5 - Equitable and responsive livelihood investments in conservancy communities

Output 6 - Successful enterprises and financial services for households, community groups, conservancies and NRT Trading policies, laws and finance

### Conserving Wildlife and Natural Resources

Output 7 - Sustainable rangelands management systems

Output 8 - Flagship species and habitat conservation programmes

Output 9 - Forest and marine ecosystem management systems

### Communications

### Partnerships

### Conservancy Sustainability

# Strengthening Conservancy Governance

## Objective 1: Strengthen governance of Community Conservancies and increase Government support to these conservancies

### Output 1 - Well-governed community conservancies

#### Leadership and Management

NRT's bespoke Leadership and Management Programme (LAMP) training - offered to all conservancy boards and committees - continues to prove a critical part of our member conservancies' journey to self-reliance. Leadership in five conservancies completed their third LAMP module during the reporting period.

Conservancy	# of Men	# of Women	Total
Nkoteiya	12	3	15
Naapu	12	3	15
Nanapsho	10	1	11
Nanapa	10	1	11
Narupa	14	4	18
<b>5 conservancies</b>	<b>58</b>	<b>12</b>	<b>70</b>

Lamp training  
Jan-Jun 2020



County	Conservancies	Training sessions	People trained
Baringo	2	12	280
Coast	7	24	209
Isiolo	8	24	453
Laikipia & Meru	7	15	533
Marsabit	4	2	26
Samburu	9	18	470
West Pokot	2	32	821
<b>8 counties</b>	<b>39</b>	<b>127</b>	<b>2,792</b>

Other  
governance  
training for  
boards and  
committees



## Strengthening Conservancy Governance

Output 1 - Well-governed community conservancies

Output 2 - Supportive Government policies, laws and finance

## Building Peace and Security

Output 3 - Effective peace-building between ethnic communities

Output 4 - Effective community policing in support of Government security agencies

## Livelihoods & Business

Output 5 - Equitable and responsive livelihood investments in conservancy communities

Output 6 - Successful enterprises and financial services for households, community groups, conservancies and NRT Trading policies, laws and finance

## Conserving Wildlife and Natural Resources

Output 7 - Sustainable rangelands management systems

Output 8 - Flagship species and habitat conservation programmes

Output 9 - Forest and marine ecosystem management systems

## Communications

## Partnerships

## Conservancy Sustainability

**50%**  
improvement  
in conservancy  
board inclusivity  
in Marsabit



## Gender inclusion

- » Since NRT recruited a gender specialist in 2019 with support from USAID, there has been a **50% improvement in board inclusivity in the Marsabit region** and in conservancies that have elected new boards since then.
- » For example, the previous board of Melako Community Conservancy was made up of 12 men and three women. New elections revealed the success of gender sensitization and inclusivity training, and the Melako board is now made up of nine men, four youth, and five women.
- » 14 gender and inclusivity forums were conducted in 20 conservancies in Samburu, Laikipia, Baringo, Isiolo, West Pokot, and Marsabit during the reporting period. 908 people took part (492 women and 416 men).
- » The NRT Senior Management Team currently has 50% female representation.



## Strengthening Conservancy Governance

Output 1 - Well-governed community conservancies

Output 2 - Supportive Government policies, laws and finance

## Building Peace and Security

Output 3 - Effective peace-building between ethnic communities

Output 4 - Effective community policing in support of Government security agencies

## Livelihoods & Business

Output 5 - Equitable and responsive livelihood investments in conservancy communities

Output 6 - Successful enterprises and financial services for households, community groups, conservancies and NRT Trading policies, laws and finance

## Conserving Wildlife and Natural Resources

Output 7 - Sustainable rangelands management systems

Output 8 - Flagship species and habitat conservation programmes

Output 9 - Forest and marine ecosystem management systems

## Communications

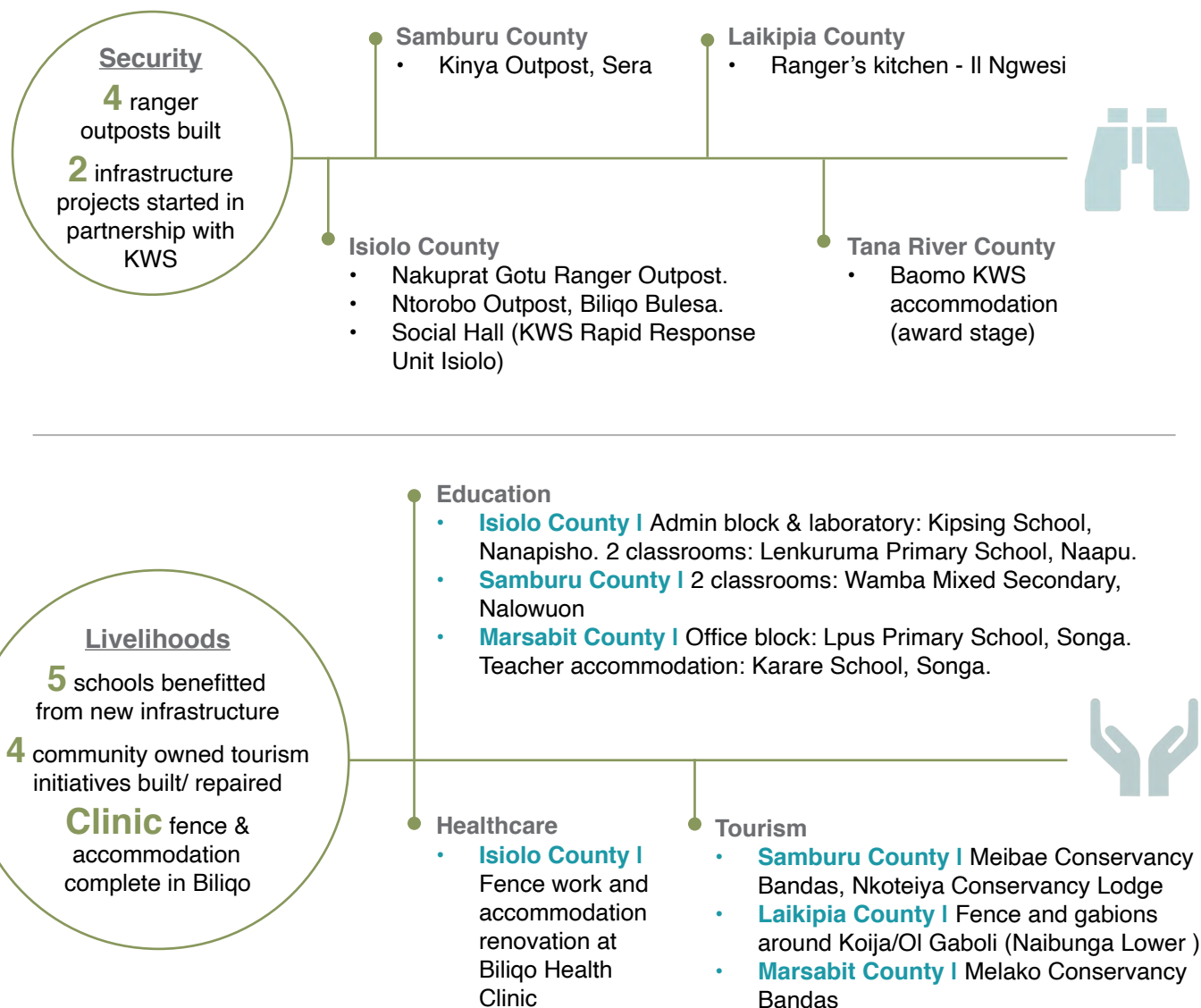
## Partnerships

## Conservancy Sustainability

## NRT Investing in Conservancy Infrastructure

During the reporting period, NRT has invested in social, security, and tourism infrastructure in conservancies:

### Q1 + Q2 2020 Infrastructure Started or Completed



## Strengthening Conservancy Governance

Output 1 - Well-governed community conservancies

Output 2 - Supportive Government policies, laws and finance

## Building Peace and Security

Output 3 - Effective peace-building between ethnic communities

Output 4 - Effective community policing in support of Government security agencies

## Livelihoods & Business

Output 5 - Equitable and responsive livelihood investments in conservancy communities

Output 6 - Successful enterprises and financial services for households, community groups, conservancies and NRT Trading policies, laws and finance

## Conserving Wildlife and Natural Resources

Output 7 - Sustainable rangelands management systems

Output 8 - Flagship species and habitat conservation programmes

Output 9 - Forest and marine ecosystem management systems

## Communications

## Partnerships

## Conservancy Sustainability



Biliqo Bulesa Clinic



Melako bandas



### ● Baringo County

- Fencing for the new Ruko Giraffe Sanctuary on the mainland started



Ruko team with the fence



New Ruko Sanctuary fence development



## Strengthening Conservancy Governance

Output 1 - Well-governed community conservancies

Output 2 - Supportive Government policies, laws and finance

## Building Peace and Security

Output 3 - Effective peace-building between ethnic communities

Output 4 - Effective community policing in support of Government security agencies

## Livelihoods & Business

Output 5 - Equitable and responsive livelihood investments in conservancy communities

Output 6 - Successful enterprises and financial services for households, community groups, conservancies and NRT Trading policies, laws and finance

## Conserving Wildlife and Natural Resources

Output 7 - Sustainable rangelands management systems

Output 8 - Flagship species and habitat conservation programmes

Output 9 - Forest and marine ecosystem management systems

## Communications

## Partnerships

## Conservancy Sustainability



## Social CoMMS

Social-CoMMS is a tool developed by NRT in conjunction with TNC to monitor the socio-economic status of conservancy communities and measure the social impact of conservancy and NRT programme activities.

It was carried out in eight conservancies during the reporting period; Naibunga Central, Naibunga Upper, Naibunga lower (Laikipia), Nkoteiya (Samburu), Naapu, Nanapisho, Nannapa, and Narupa (Isiolo). **2,462 households were surveyed.**

- » 49% of participants were men and 51% were women.
- » 26% of these households were female headed.

- » Predominant livelihood activities are **livestock rearing (63%)** and **casual employment (24%)**
- » **5% of the population are employed by the conservancies** with 16% being casual employees.
- » 51% of the respondents indicated their **incomes have increased** over the last three years.
- » **78% indicated that they feel safe** due to the presence of the conservancies security team.

- » **Human wildlife conflict is high at 70%** (mostly crop damage).
- » However, **58% believe the benefits of wildlife outweigh the cost.**
- » **85% of the population believe wildlife is important to their future.**
- » 22% of the households received education bursaries from the conservancies in the last 5 years.
- » 56% indicated that their **general well-being has improved** in the last 5 years.



## Strengthening Conservancy Governance

**Output 1 - Well-governed community conservancies**

Output 2 - Supportive Government policies, laws and finance

## Building Peace and Security

Output 3 - Effective peace-building between ethnic communities

Output 4 - Effective community policing in support of Government security agencies

## Livelihoods & Business

Output 5 - Equitable and responsive livelihood investments in conservancy communities

Output 6 - Successful enterprises and financial services for households, community groups, conservancies and NRT Trading policies, laws and finance

## Conserving Wildlife and Natural Resources

Output 7 - Sustainable rangelands management systems

Output 8 - Flagship species and habitat conservation programmes

Output 9 - Forest and marine ecosystem management systems

## Communications

## Partnerships

## Conservancy Sustainability

Each conservancy has its own unique environmental, cultural and political situation, and it is therefore not easy to compare Social CoMMs 'performance' across conservancies. These surveys were baseline surveys except for the one undertaken in Naapu Conservancy, formally Mpus Kutuk, which took part in Social CoMMS in 2015. Insights from these two surveys showed:

Insight	2015 result	2020 result
Security in the community has improved	23%	66%
Feels safe as a result of the conservancy	51%	91%
General wellbeing	19%	49%
The benefits of wildlife outweigh the cost	42%	55%
Wildlife is important to my future	44%	54%

## Insights from Naapu Conservancy Social CoMMS surveys

**85%**  
of Social CoMMS participants believe wildlife is important to their future





## Strengthening Conservancy Governance

Output 1 - Well-governed community conservancies

**Output 2 - Supportive Government policies, laws and finance**

## Building Peace and Security

Output 3 - Effective peace-building between ethnic communities

Output 4 - Effective community policing in support of Government security agencies

## Livelihoods & Business

Output 5 - Equitable and responsive livelihood investments in conservancy communities

Output 6 - Successful enterprises and financial services for households, community groups, conservancies and NRT Trading policies, laws and finance

## Conserving Wildlife and Natural Resources

Output 7 - Sustainable rangelands management systems

Output 8 - Flagship species and habitat conservation programmes

Output 9 - Forest and marine ecosystem management systems

## Communications

## Partnerships

## Conservancy Sustainability

## Output 2 - Supportive Government policies, laws and finance

Conservancy	County Gov. - Operations (KSh.)	County Gov. - Capex (KSh.)	Project
<b>Baringo County Government</b>			
Ruko	-	1 million	• Construction of conservancy staff houses
<b>Baringo County Government Total</b>			<b>1 million</b>
<b>Samburu County Government</b>			
Ltungai		5 million	• Development of tourism bandas
West Gate	2 million	9 million	<ul style="list-style-type: none"> <li>• 7 million for the construction of four tourism bandas</li> <li>• 2 million for the construction of a curio shop to enable women to sell their crafts to tourists at the airstrip</li> <li>• 2 million as annual contribution from Samburu National Park (in recognition of the buffer zone services Westgate provides)</li> </ul>
Kalama	2 million	5 million	<ul style="list-style-type: none"> <li>• 5 million for Kalama Resource Centre</li> <li>• 2 million as annual contribution from Samburu National Park (in recognition of the buffer zone services Kalama provides)</li> </ul>
Meibae	6 million	3 million	<ul style="list-style-type: none"> <li>• 3 million for construction of tourism bandas</li> <li>• 2 million toward banda running costs</li> <li>• 4 million awarded through Wamba West Ward</li> </ul>
Ngilai (Namunyak)	3 million	-	• Through Wamba North ward
Nalowuon (Namunyak)	3 million	-	• Through Wamba East ward
<b>Samburu County Government Total</b>			<b>38 million</b>
<b>Isiolo County Government</b>			
Biliqo Bulesa	3 million	4 million	<ul style="list-style-type: none"> <li>• 4 million for water project</li> <li>• 3 million to support Biliqo Clinic</li> </ul>
Naapu (Oldonyiro)	4.2 million		• Grass reseeding
<b>Isiolo County Government Total</b>			<b>11.2 million</b>



## Strengthening Conservancy Governance

Output 1 - Well-governed community conservancies

Output 2 - Supportive Government policies, laws and finance

## **Building Peace and Security**

**Output 3 - Effective peace-building between ethnic communities**

Output 4 - Effective community policing in support of Government security agencies

## Livelihoods & Business

Output 5 - Equitable and responsive livelihood investments in conservancy communities

Output 6 - Successful enterprises and financial services for households, community groups, conservancies and NRT Trading policies, laws and finance

## Conserving Wildlife and Natural Resources

Output 7 - Sustainable rangelands management systems

Output 8 - Flagship species and habitat conservation programmes

Output 9 - Forest and marine ecosystem management systems

## Communications

## Partnerships

## Conservancy Sustainability



# Building Peace and Security

## Output 3 - Effective peace-building between ethnic communities

NRT's Peace Programme Strategy for the next five years (2018-2022) has been published. It draws lessons learnt since NRT established a dedicated Peace Programme five years ago and from other best practices from similar programmes in the country and elsewhere. It takes into account the successes amidst the significant challenges and continued conflict in the NRT landscape. [Read it here.](#)

### Peace activities during the reporting period

- » **182 participants** engaged across **4 peace training sessions** conducted by the NRT peace team
- » **1,531 participants** engaged in **56 peace awareness and dialogue sessions**
  - » **Peace ambassadors:** 19 women peace ambassadors were trained and welcomed to the NRT member conservancies peace ambassadors' network, bringing the total number of women in the network to 25, out of a team of 90. Most are from conflict hotspot areas and have been instrumental in addressing intertribal conflicts and averting raids through early warning systems, gathering intelligence, intercepting retaliatory attacks, supporting the recovery of stolen livestock, and leading reconciliations in the community.

**1,531**  
participants  
engaged in  
56 peace  
awareness  
sessions

## Strengthening Conservancy Governance

Output 1 - Well-governed community conservancies

Output 2 - Supportive Government policies, laws and finance

## Building Peace and Security

Output 3 - Effective peace-building between ethnic communities

**Output 4 - Effective community policing in support of Government security agencies**

## Livelihoods & Business

Output 5 - Equitable and responsive livelihood investments in conservancy communities

Output 6 - Successful enterprises and financial services for households, community groups, conservancies and NRT Trading policies, laws and finance

## Conserving Wildlife and Natural Resources

Output 7 - Sustainable rangelands management systems

Output 8 - Flagship species and habitat conservation programmes

Output 9 - Forest and marine ecosystem management systems

## Communications

## Partnerships

## Conservancy Sustainability



## Output 4 - Effective community policing in support of Government security agencies

- » **Two new mobile teams launched:** Two new mobile security teams, 9-6 and 9-7, were operationalised in NRT North Rift and NRT Coast respectively in the first half of 2020. Each of the teams comprises 10 NRT rangers drawn from the conservancies and four Kenya Wildlife Service (KWS) personnel. Scouts in the 9-6 team in North Rift are from the Pokot, Marakwet and Turkana communities who live in the coverage area - and will primarily focus on the protection of over 400 elephants in Nasolot-South Turkana-Masol ecosystem. The team was launched with the support of West Pokot parliamentary leadership, the National Government administration and the County Government of West Pokot. The 9-7 team draws its members from all seven community conservancies at the Coast and will support the existing rapid response team at the coast – the 9-3 team - in tackling rampant bushmeat poaching.
- » **Joint patrols:** In an effort to respond to increasing insecurity and bushmeat poaching, pool security resources and save on operational costs where possible, many neighbouring community conservancies have been conducting joint patrols. A total of 71 inter-conservancy joint patrols have been conducted during the reporting period. At the coast, conservancies have been conducting patrols with the Fisheries Department of Lamu County (FiD), Kenya Wildlife Service (KWS) and Kenya Forest Service (KFS) rangers in ‘hotspot’ areas to deter illegal mangrove logging, illegal fishing and sea turtle poaching.

Month	Road Banditry	Arrests (Bushmeat)	Stock theft cases	Planned raids averted	Weapons recovered
January	3	12	11	4	0
February	4	8	10	5	0
March	2	6	7	8	0
April	1	4	8	6	1
May	2	1	11	7	4
June	2	5	3	3	1
<b>Total</b>	<b>14</b>	<b>36</b>	<b>50</b>	<b>33</b>	<b>6</b>

Incident  
monthly  
breakdown  
Jan - June  
2020



## Strengthening Conservancy Governance

Output 1 - Well-governed community conservancies

Output 2 - Supportive Government policies, laws and finance

## Building Peace and Security

Output 3 - Effective peace-building between ethnic communities

**Output 4 - Effective community policing in support of Government security agencies**

## Livelihoods & Business

Output 5 - Equitable and responsive livelihood investments in conservancy communities

Output 6 - Successful enterprises and financial services for households, community groups, conservancies and NRT Trading policies, laws and finance

## Conserving Wildlife and Natural Resources

Output 7 - Sustainable rangelands management systems

Output 8 - Flagship species and habitat conservation programmes

Output 9 - Forest and marine ecosystem management systems

## Communications

## Partnerships

## Conservancy Sustainability

Other security incidents at the coast included the arrest of 35 fishers with two fishing vessels for fishing inside protected marine areas (LMMAs). 25 were fined and 13 released with a warning. Four illegal loggers were also arrested and released with a warning.

Month	Stolen	Recovered	Success percentage
January	1,608	1,010	63%
February	839	839	100%
March	462	462	100%
April	309	256	82%
May	546	519	95%
June	62	57	92%
<b>Total</b>	<b>3,826</b>	<b>3,143</b>	<b>82%</b>

## Stock theft breakdown Jan - June 2020

**The 82% success rate in stock recovery is a commendable achievement** - this compared to 50% recovery rate for the whole of 2019. Stock recovery has been **instrumental in preventing retaliatory attacks** and breaking the conflict cycle, and is a testament to the hard work and collaboration of the conservancy rangers, mobile teams, peace teams, and relevant government authorities.



## Strengthening Conservancy Governance

Output 1 - Well-governed community conservancies

Output 2 - Supportive Government policies, laws and finance

## Building Peace and Security

Output 3 - Effective peace-building between ethnic communities

Output 4 - Effective community policing in support of Government security agencies

## Livelihoods & Business

Output 5 - Equitable and responsive livelihood investments in conservancy communities

Output 6 - Successful enterprises and financial services for households, community groups, conservancies and NRT Trading policies, laws and finance

## Conserving Wildlife and Natural Resources

Output 7 - Sustainable rangelands management systems

Output 8 - Flagship species and habitat conservation programmes

Output 9 - Forest and marine ecosystem management systems

## Communications

## Partnerships

## Conservancy Sustainability

# Livelihoods & Business

## Output 5 - Equitable and responsive livelihood investments in conservancy communities

### Employment

NRT and the community conservancies collectively are one of the biggest employers in the landscape. The number of permanent NRT and NRT Trading employees now stands at 278, while member conservancies employ 1,066 people.



### Conservancy Livelihood Fund (CLF) - 2020 applications

The CLF has suffered disruption this year due to the impacts of COVID-19. The pandemic has demanded funds from various areas, including the CLF, to be reallocated to serve immediate and urgent priorities in the conservancies, and this was done in consultation with our donors and partners.

However, NRT member conservancies at the coast were able to apply for funding from a KSh. 20 million CLF, supported by the US Department of Interior (DOI) initiated in 2020 towards community livelihoods in agriculture, ocean plastics recycling, micro-credit as well as education and vocational training.

Conservancy	Sector	Request USD
Awer	Agriculture	28,571
Hanshak Nyongoro	Microfinance	28,571
Ishaqbini	Microfinance	28,571
Kiunga	Environment	28,571
Lower Tana	Microfinance	28,571
Ndera	Education & vocational training	28,571
Pate	Microfinance	28,571
	<b>Total</b>	<b>200,000</b>

**Coastal conservancies 2020 CLF spending**



## Strengthening Conservancy Governance

Output 1 - Well-governed community conservancies

Output 2 - Supportive Government policies, laws and finance

## Building Peace and Security

Output 3 - Effective peace-building between ethnic communities

Output 4 - Effective community policing in support of Government security agencies

## Livelihoods & Business

**Output 5 - Equitable and responsive livelihood investments in conservancy communities**

Output 6 - Successful enterprises and financial services for households, community groups, conservancies and NRT Trading policies, laws and finance

## Conserving Wildlife and Natural Resources

Output 7 - Sustainable rangelands management systems

Output 8 - Flagship species and habitat conservation programmes

Output 9 - Forest and marine ecosystem management systems

## Communications

## Partnerships

## Conservancy Sustainability



We are hopeful that with continued support from USAID, TNC and DANIDA we can enable a CLF application opportunity for other conservancies later in the year.

There are confirmed CLF funds for Oldonyiro, Naibunga and Nkoteiya (March 2020 to February 2021) to support classrooms at Lenkuruma Primary School (Oldonyiro) and the purchase of motorbikes for youth in Naibunga and Nkoteiya, to start or boost businesses.

Some CLF applications approved in 2019 have now been disbursed for impact in 2020:

- » Kaptuya Community Conservancy was awarded CLF funds to distribute **208 beehives to 40 conservancy members**. It is hoped the beehives will contribute to diversified and sustainable economies for many families. The beehive owners have completed training.
- » **1,472 children will benefit from bursaries** in Nalowuon Conservancy (1,415 students) and Kirimon (57 students).
- » 35 youth from the Naibunga Community Conservancies were awarded motorbikes with CLF funding, for starting or boosting existing business. The youth have completed training with the NRT Trading enterprise team – a condition of the award.
- » Building continues at the Biliqo-Bulesa Dispensary.
- » Meibae tourism bandas (now complete).

## Strengthening Conservancy Governance

Output 1 - Well-governed community conservancies

Output 2 - Supportive Government policies, laws and finance

## Building Peace and Security

Output 3 - Effective peace-building between ethnic communities

Output 4 - Effective community policing in support of Government security agencies

## Livelihoods & Business

**Output 5 - Equitable and responsive livelihood investments in conservancy communities**

Output 6 - Successful enterprises and financial services for households, community groups, conservancies and NRT Trading policies, laws and finance

## Conserving Wildlife and Natural Resources

Output 7 - Sustainable rangelands management systems

Output 8 - Flagship species and habitat conservation programmes

Output 9 - Forest and marine ecosystem management systems

## Communications

### Partnerships

### Conservancy Sustainability

## Water resource management

NRT has recently established a water programme with dedicated staff to implement it. This builds on almost a decade of NRT's investment in water development in member conservancies. The overall aim of the water programme is to ensure water investments are planned holistically, address community priorities, take into account social and environmental considerations and build conservancy-level governance and management capacity. The new NRT water strategy outlines a **new approach to NRT's water development, that is shifting from project-type infrastructure to a more integrated approach**. This involves water resource planning, management, and infrastructure development, with conservancies as the entry point for all aspects of the programme. [Download the strategy here.](#)

### **Activities during the reporting period:**

- » Water technician recruited to service all community conservancy water infrastructure going forward.
- » Water resources mapping and strategy development ongoing:
  - » **Laikipia: 3 complete, 1 ongoing.**  
Naibunga (Lower, Center and Upper): complete. Lekurruki: ongoing.
  - » **Samburu: 2 complete, 6 starting.**  
Nkoteiya, Meibae: complete. Kalama, Westgate, Ltungai, Namunyak (Ngilai, Kalepo and Nalowuon): starting
  - » **Isiolo: 5 complete, 1 starting.**  
Biliqo Bulesa, Nannapa, Narupa, Naapu, Nanapisho: complete. Nakuprat Gotu: starting.
  - » **Marsabit: 1 complete (Melako).**
- » Water quality monitoring conducted in Sera Rhino Sanctuary, Reteti Elephant Sanctuary and Biliqo Bulesa.
- » Building water governance capability at the conservancy level to manage the existing, new and rehabilitated water supply infrastructure. This was undertaken through a comprehensive approach called "Integrity Management Toolbox" - trialled in Meibae, Melako and the Oldonyiro conservancies. This toolbox aims to strengthen indigenous ownership of conservancy water resources, working closely with county governments, and we hope to offer it to more member conservancies soon.



## Strengthening Conservancy Governance

Output 1 - Well-governed community conservancies

Output 2 - Supportive Government policies, laws and finance

## Building Peace and Security

Output 3 - Effective peace-building between ethnic communities

Output 4 - Effective community policing in support of Government security agencies

## Livelihoods & Business

**Output 5 - Equitable and responsive livelihood investments in conservancy communities**

Output 6 - Successful enterprises and financial services for households, community groups, conservancies and NRT Trading policies, laws and finance

## Conserving Wildlife and Natural Resources

Output 7 - Sustainable rangelands management systems

Output 8 - Flagship species and habitat conservation programmes

Output 9 - Forest and marine ecosystem management systems

## Communications

## Partnerships

## Conservancy Sustainability

- » Water access improved for people, livestock, wildlife, conservancy headquarters and ranger outposts through building, repairing or upgrading wells, dams, and tanks:

<b>Conservancy</b>	<b>Infrastructure</b>	<b>Beneficiaries (estimated) if known</b>
<b>Isiolo</b>		
Narupa Conservancy	Sand dam development (siting, survey and designs finalised)	300 persons
Biliqo Bulesa	New well excavated and solar powered pump installed to supply water to the residents of Dima Adho village	200 h/h
	New well excavated and 2.5km of pipeline installed to serve the new Biliqo clinic and the residents of Biliqo village	500 h/h
	Goone o Nkura Water Supply, Intake works rehabilitated and pump serviced for the dry season livestock water supply.	
<b>Samburu</b>		
Meibae Conservancy	Sand dam development (siting, survey and designs finalised)	
	Repair of Lekiji borehole (supplies village and school)	200 h/h
	Rock catchment water harvesting and storage tank for Conservancy HQ	30 rangers
Kalama Conservancy	Sand dam development (siting, survey and designs finalised)	700 people
	Rock catchment surveyed and designed, and construction tendered for Kalama Resource Center water supply	
Sera Rhino Sanctuary	Serviced desalination plant to provide clean water for rangers from highly mineralised well water. Plans to install a new unit are underway.	
	Re-build of Lchoro Lolosowan Well (washed away in floods) is nearing completion - the well feeds critical wildlife water points in the Sanctuary.	



### Strengthening Conservancy Governance

Output 1 - Well-governed community conservancies

Output 2 - Supportive Government policies, laws and finance

### Building Peace and Security

Output 3 - Effective peace-building between ethnic communities

Output 4 - Effective community policing in support of Government security agencies

### Livelihoods & Business

Output 5 - Equitable and responsive livelihood investments in conservancy communities

Output 6 - Successful enterprises and financial services for households, community groups, conservancies and NRT Trading policies, laws and finance

### Conserving Wildlife and Natural Resources

Output 7 - Sustainable rangelands management systems

Output 8 - Flagship species and habitat conservation programmes

Output 9 - Forest and marine ecosystem management systems

### Communications

### Partnerships

### Conservancy Sustainability

Conservancy	Infrastructure	Beneficiaries (estimated) if known
<b>Marsabit</b>		
Melako	2 new wells built in Nairibi and Lontolio villages, 1 new well and 1 well repaired to serve Sokotei and Ndikir villages in the dry season	150 h/h
	Rock catchment water harvesting and storage tank for Irrir village	190 h/h
Songa	2.3km new pipeline extension into existing tank, and repair of of water point at Kamboe	70 h/h
	Rehabilitation of 3 wells at Lpus, Songa and Kituruni villages	100 h/h
	2.5km of new water pipeline into Songa village	60 h/h
<b>Coast</b>		
Ishaqbini (Garissa County Government)	Proposed water pans for Hirola Sanctuary have been designed and a fundraising proposals submitted. These will ensure reduced reliance on the pumped pipeline system currently in the sanctuary which is prone to breakages.	

**570**  
households  
benefitting  
from water  
infrastructure  
in Marsabit



## Strengthening Conservancy Governance

Output 1 - Well-governed community conservancies

Output 2 - Supportive Government policies, laws and finance

## Building Peace and Security

Output 3 - Effective peace-building between ethnic communities

Output 4 - Effective community policing in support of Government security agencies

## Livelihoods & Business

**Output 5 - Equitable and responsive livelihood investments in conservancy communities**

Output 6 - Successful enterprises and financial services for households, community groups, conservancies and NRT Trading policies, laws and finance

## Conserving Wildlife and Natural Resources

Output 7 - Sustainable rangelands management systems

Output 8 - Flagship species and habitat conservation programmes

Output 9 - Forest and marine ecosystem management systems

## Communications

## Partnerships

## Conservancy Sustainability

## Education

All schools in Kenya were closed in March due to the coronavirus pandemic, causing all planned educational activities to be postponed. However, NRT has been working with the conservancies to take advantage of empty schools to expedite the planned building of classrooms, teacher's accommodation and other facilities (see NRT Investing in Conservancy Infrastructure). All activities planned for 2020 that involved high numbers of students will be swapped with the infrastructure projects planned for 2021.

## Healthcare

- » In March an NRT community health outreach clinic in Songa Conservancy in partnership with Kituruni Clinic treated 200 mothers and over 300 children. As well as treating ailments ranging from jigger infestations to respiratory issues, there was a focus on hygiene and nutrition, with porridge, vitamins and soaps dispensed to those in need.
- » The community-built Laresoro Clinic in Kalama received a consignment of drugs from NRT, enabling it to meet the growing demand from communities in Kalama and Sera conservancies.



## Strengthening Conservancy Governance

Output 1 - Well-governed community conservancies

Output 2 - Supportive Government policies, laws and finance

## Building Peace and Security

Output 3 - Effective peace-building between ethnic communities

Output 4 - Effective community policing in support of Government security agencies

## Livelihoods & Business

Output 5 - Equitable and responsive livelihood investments in conservancy communities

Output 6 - Successful enterprises and financial services for households, community groups, conservancies and NRT Trading policies, laws and finance

## Conserving Wildlife and Natural Resources

Output 7 - Sustainable rangelands management systems

Output 8 - Flagship species and habitat conservation programmes

Output 9 - Forest and marine ecosystem management systems

## Communications

## Partnerships

## Conservancy Sustainability

## Output 6 - Successful enterprises and financial services for households, community groups, conservancies and NRT Trading policies, laws and finance

NRT Trading is in the process of drafting a new five-year Strategic Plan that will map out the development of its 3-pillar business model to 2025. This will be published upon approval from the board in August 2020.

### **Pillar 1: NRT Trading businesses:**

- » **Livestock to Market (LTM):**
  - » **Ten livestock markets were held** during the reporting period, in seven member conservancies. Songa and Shurr in Marsabit requested more than one market to support struggling pastoralists and promote good rangelands practices.
  - » Of the 547 sellers, 169 were women. In total **sellers earned KSh. 75.3 million from cattle sales**, with their **respective conservancies receiving KSh. 4.6 million in conservation contributions** from both NRT Trading and the cattle sellers themselves, who donate a proportion of their sales to their conservancies.

Conservancy	No. Markets	No. Cattle	KSh. Paid	Sellers		
				Men	Women	Total
<b>Marsabit</b>						
Melako	1	312	12,439,270	104	10	114
Songa	3	319	12,883,950	86	137	223
Shurr	2	909	39,976,480	116	4	120
<b>Marsabit Total</b>	<b>6</b>	<b>1,540</b>	<b>65,299,700</b>	<b>306</b>	<b>151</b>	<b>457</b>
<b>Samburu</b>						
Sera	1	21	899,215	18		18
Namunyak-(Ngilai)	1	15	483,010		9	9
<b>Samburu Total</b>	<b>2</b>	<b>36</b>	<b>1,382,225</b>	<b>18</b>	<b>9</b>	<b>27</b>
<b>Isiolo</b>						
Nasuulu	1	2	89,375	1		1
Biliqo-Bulesa	1	186	8,521,980	53	9	62
<b>Isiolo Total</b>	<b>2</b>	<b>188</b>	<b>8,611,355</b>	<b>54</b>	<b>9</b>	<b>63</b>
<b>Total</b>	<b>10</b>	<b>1,764</b>	<b>85,286,860</b>	<b>378</b>	<b>169</b>	<b>547</b>

LTM sales figures



## Strengthening Conservancy Governance

Output 1 - Well-governed community conservancies

Output 2 - Supportive Government policies, laws and finance

## Building Peace and Security

Output 3 - Effective peace-building between ethnic communities

Output 4 - Effective community policing in support of Government security agencies

## Livelihoods & Business

Output 5 - Equitable and responsive livelihood investments in conservancy communities

Output 6 - Successful enterprises and financial services for households, community groups, conservancies and NRT Trading policies, laws and finance

## Conserving Wildlife and Natural Resources

Output 7 - Sustainable rangelands management systems

Output 8 - Flagship species and habitat conservation programmes

Output 9 - Forest and marine ecosystem management systems

## Communications

## Partnerships

## Conservancy Sustainability

Conservancy	Seller contribution	NRTT contribution	(Minus tax (cess))	Total
<b>Marsabit</b>				
Melako	312,000.00	624,000.00	124,800	811,200
Songa	319,000.00	638,000.00	127,600	829,400
Shurr	909,000.00	1,818,000	363,600	2,363,400
<b>Marsabit Total</b>	<b>1,540,000</b>	<b>3,080,000</b>	<b>616,000</b>	<b>4,004,000</b>
<b>Samburu</b>				
Sera	21,000	42,000	6,300	56,700
Namunyak-(Ngilai)	15,000	30,000	4,500	40,500
<b>Samburu Total</b>	<b>36,000</b>	<b>72,000</b>	<b>10,800</b>	<b>97,200</b>
<b>Isiolo</b>				
Nasuulu	2,000	4,000.00	600.00	5,400.00
Biliqo-Bulesa	186,000	372,000.00	55,800	502,200
<b>Isiolo Total</b>	<b>188,000</b>	<b>376,000</b>	<b>56,400</b>	<b>507,600</b>
<b>Total</b>			<b>683,200</b>	<b>4,608,800</b>

## Conservancy revenue from sales

**KSh. 683,200**  
paid in tax

**KSh. 4.6 million**  
contribution to community conservancies from LTM



## Strengthening Conservancy Governance

Output 1 - Well-governed community conservancies

Output 2 - Supportive Government policies, laws and finance

## Building Peace and Security

Output 3 - Effective peace-building between ethnic communities

Output 4 - Effective community policing in support of Government security agencies

## Livelihoods & Business

Output 5 - Equitable and responsive livelihood investments in conservancy communities

**Output 6 - Successful enterprises and financial services for households, community groups, conservancies and NRT Trading policies, laws and finance**

## Conserving Wildlife and Natural Resources

Output 7 - Sustainable rangelands management systems

Output 8 - Flagship species and habitat conservation programmes

Output 9 - Forest and marine ecosystem management systems

## Communications

## Partnerships

## Conservancy Sustainability

- » LTM aims to improve the income pastoralists receive from their cattle, and reinforce the link between healthy rangelands and healthy livestock, while contributing to wildlife conservation in the region with a percentage of each sale going to the host community conservancy. That is why they have selected five quality breeding bulls from the LTM herd to be used to improve genetic quality of cattle in Il Ngwesi Conservancy.

## » **BeadWORKS:**

- » BeadWORKS has been granted a provisional membership to the World Fair Trade Organisation (WFTO). Upon successful completion of the subsequent monitoring period, BeadWORKS will be accorded full membership to the global network, which provides the programme global credibility in addition to tools to increase market access. This is the culmination of months of hard work from the BeadWORKS team, who look forward to WFTO status benefitting the BeadWORKS artisans through increased income.
- » The 1,124 BeadWORKS artisans earned Ksh. 5,420,647 from the sale of beaded products in the reporting period.
- » KSh. 444,000 was paid to Star Beaders, who oversee production and quality control in their groups.
- » 280 women in Lekuruki, Leparua, Westgate, Kalama and Sera attended leather training, to enable them to diversify into leather beaded belts, dog collars and bags. It was partly due to this diversification that BeadWORKS artisans realised a 94% increase in income in 2019, compared to the previous year.



Robin Downs



Robin Downs



## Strengthening Conservancy Governance

Output 1 - Well-governed community conservancies

Output 2 - Supportive Government policies, laws and finance

## Building Peace and Security

Output 3 - Effective peace-building between ethnic communities

Output 4 - Effective community policing in support of Government security agencies

## Livelihoods & Business

Output 5 - Equitable and responsive livelihood investments in conservancy communities

**Output 6 - Successful enterprises and financial services for households, community groups, conservancies and NRT Trading policies, laws and finance**

## Conserving Wildlife and Natural Resources

Output 7 - Sustainable rangelands management systems

Output 8 - Flagship species and habitat conservation programmes

Output 9 - Forest and marine ecosystem management systems

## Communications

## Partnerships

## Conservancy Sustainability



Melako bandas

## **Pillar 2: Conservancy enterprises**

### » **Tourism**

- » The coronavirus epidemic has devastated Kenya's tourism industry, which brought in two million visitors last year, generated KSh. 164 billion in revenue and employs one in 12 Kenyans.
- » For NRT member conservancies, the loss of tourism revenue has left a significant gap in their usual operational and community project budgets – a gap that NRT and partners have been working hard to try and fill. Many lodge staff have lost their jobs, and the economic impact of this will be felt across hundreds of households. We expect that the tourism products in the NRT landscape will make only 25% of the total turnover for 2019.
- » Domestic tourism however, could provide a semblance of a lifeline, especially to those conservancies with self-catering products or campsites. Melako Conservancy opened its self-catering bandas in May, situated on the edge of the Merille lugga. It is Melako's first tourism initiative, and is wholly owned and operated by the community. The bandas have generated KSh. 476,000 for the conservancy so far.

## Strengthening Conservancy Governance

Output 1 - Well-governed community conservancies

Output 2 - Supportive Government policies, laws and finance

## Building Peace and Security

Output 3 - Effective peace-building between ethnic communities

Output 4 - Effective community policing in support of Government security agencies

## Livelihoods & Business

Output 5 - Equitable and responsive livelihood investments in conservancy communities

**Output 6 - Successful enterprises and financial services for households, community groups, conservancies and NRT Trading policies, laws and finance**

## Conserving Wildlife and Natural Resources

Output 7 - Sustainable rangelands management systems

Output 8 - Flagship species and habitat conservation programmes

Output 9 - Forest and marine ecosystem management systems

## Communications

## Partnerships

## Conservancy Sustainability

### » **Fodder banks**

- » NRT Trading is exploring the use of fodder banking by conservancies to build resilience to drought by growing and storing their own livestock feed. This will enable families to maintain meat and milk production through dry seasons and could also help to mitigate resource-based conflict in some areas. Pastoralists in Ltungai Community Conservancy took part in the pilot fodder banks programme, and during the reporting period the NRT Trading team visited the conservancy to follow up on progress and hand over grass cutting equipment. When the programme started in November 2019, farmers were trained on growing nutritious grass, and took part in an exposure trip to similar programmes in Narok County. With the motorized grass cutting equipment, herbicides, and baling equipment now received from NRT Trading, farmers can now harvest this grass. Plans are underway to build six fodder stores at strategic locations in the conservancy so that farmers can store their excess bales to sell or use at a later date.

### » **Gums and resins:**

- » NRT-Trading has identified gums and resins as another north Kenya value chain that can improve the livelihoods of communities — if the collectors and aggregators of gums and resins are supported to increase supply quantity and quality. Gum harvesting has been in existence in the region for many years, but it has not been fully exploited, especially in counties like Isiolo, Marsabit, and Samburu which are estimated to have some of the highest potential for quality gum and resins production. Towards this end, 60 gum and resins collectors and aggregators from Sera and Meibae community conservancies (4 men and 56 women) were trained in areas of production, quality management, and market access during the reporting period.



## Strengthening Conservancy Governance

Output 1 - Well-governed community conservancies

Output 2 - Supportive Government policies, laws and finance

## Building Peace and Security

Output 3 - Effective peace-building between ethnic communities

Output 4 - Effective community policing in support of Government security agencies

## Livelihoods & Business

Output 5 - Equitable and responsive livelihood investments in conservancy communities

Output 6 - Successful enterprises and financial services for households, community groups, conservancies and NRT Trading policies, laws and finance

## Conserving Wildlife and Natural Resources

Output 7 - Sustainable rangelands management systems

Output 8 - Flagship species and habitat conservation programmes

Output 9 - Forest and marine ecosystem management systems

## Communications

## Partnerships

## Conservancy Sustainability

## Pillar 3: Household Enterprises

### » Northern Rangelands Savings and Credit Cooperative:

SACCO activity	
New members recruited in the reporting period	503
<b>Total NR SACCO membership</b>	<b>3,228</b>
Saved in 2020	KSh. 3 million (0.5 million in shares)
<b>Total savings/shares since inception</b>	<b>KSh. 16 million</b>
Loans disbursed in 2020	KSh. 22 million to 581 businesses
<b>Total loans disbursed</b>	<b>KSh. 80.58 million to 2,582 businesses</b>
People trained in financial literacy/ savings in 2020	850
<b>Total people trained</b>	<b>2,929</b>

## Savings & Credit Cooperative

**KSh. 22 million** distributed community entrepreneurs through SACCO (Q1, Q2 2020)



## Strengthening Conservancy Governance

Output 1 - Well-governed community conservancies

Output 2 - Supportive Government policies, laws and finance

## Building Peace and Security

Output 3 - Effective peace-building between ethnic communities

Output 4 - Effective community policing in support of Government security agencies

## Livelihoods & Business

Output 5 - Equitable and responsive livelihood investments in conservancy communities

Output 6 - Successful enterprises and financial services for households, community groups, conservancies and NRT Trading policies, laws and finance

## **Conserving Wildlife and Natural Resources**

**Output 7 - Sustainable rangelands management systems**

Output 8 - Flagship species and habitat conservation programmes

Output 9 - Forest and marine ecosystem management systems

## Communications

## Partnerships

## Conservancy Sustainability

# Conserving Wildlife and Natural Resources

## Output 7 - Sustainable rangelands management systems

### Veg CoMMS

Veg-CoMMS is a vegetation monitoring system adapted by NRT from the US Department of Agriculture's Monitoring Rangeland Health Guide, to be appropriate for implementation by community conservancies. Approximately 200 Veg-CoMMS monitoring sites have been established so far, in 13 conservancies.

During the reporting period, **175 sites were sampled in 15 conservancies**. 43 NRT and conservancy staff conducted the field surveys across three weeks (25th May to 13th June 2020). These sites spanned Laikipia, Isiolo, Samburu, Marsabit and Garissa.

### Key findings:

- » Good vegetative cover (both grass and woody plants) in Naibunga and Sera
- » Sera has the highest plant base and cover with least bare ground
- » Naibunga has the most bare ground despite high vegetative cover
- » Meibae, Ol Donyiro, Leparua and Nasulu are severely degraded with high bare ground
- » There was notable plant succession from annual plants (grass) to perennial plants (grass, forbs and shrubs)

### Key recommendations

- » Re-evaluate sampling effort to only reflect the management zones. This should include a separate sampling plan for cleared and re-seeded area, gully healing etc.
- » Evaluate the Veg CoMMS with grazing regimes/ management
- » Include evaluation of grass and browse biomass to estimate relative carrying capacity of animals for specific periods which can enhance grazing management
- » Continue to reduce the pressure of alien and invasive species especially *Acacia reficiens* and *Sanseveria spp.* and provide more space for grass growth.



## Strengthening Conservancy Governance

Output 1 - Well-governed community conservancies

Output 2 - Supportive Government policies, laws and finance

## Building Peace and Security

Output 3 - Effective peace-building between ethnic communities

Output 4 - Effective community policing in support of Government security agencies

## Livelihoods & Business

Output 5 - Equitable and responsive livelihood investments in conservancy communities

Output 6 - Successful enterprises and financial services for households, community groups, conservancies and NRT Trading policies, laws and finance

## Conserving Wildlife and Natural Resources

Output 7 - Sustainable rangelands management systems

Output 8 - Flagship species and habitat conservation programmes

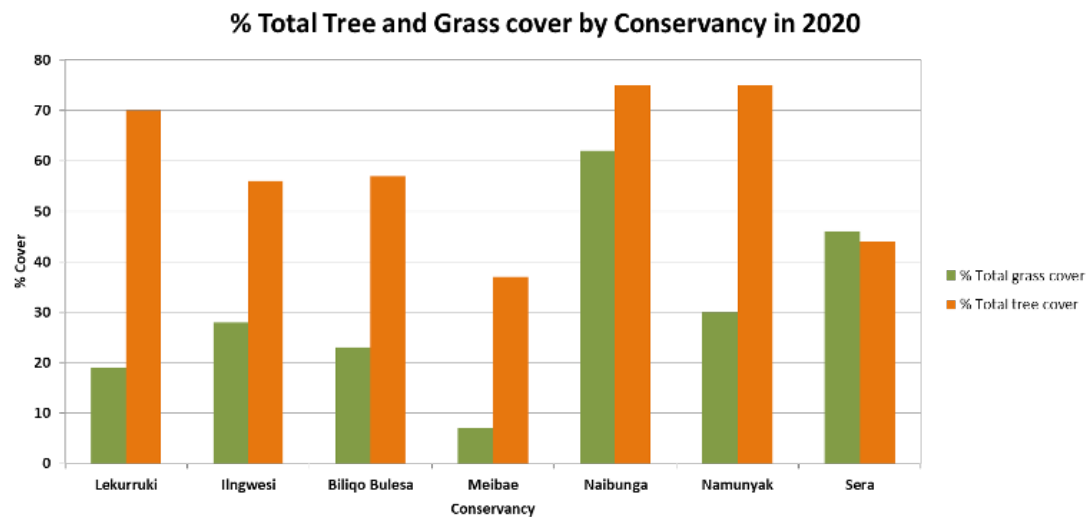
Output 9 - Forest and marine ecosystem management systems

## Communications

## Partnerships

## Conservancy Sustainability

- » Encourage grass hay harvesting in areas with high grass biomass. This can be used in the feedlot program
- » Some areas with high grass biomass require fire management plans
- » Need to develop a vegetation map for the landscape and map out priority areas for targeted restoration/ rehabilitation. This can cut across degraded forest, important wetlands, grasslands, riverine and grasslands.



## **Rehabilitation**

- » **3,848 hectares were rid of the prolific and damaging *Acacia reficiens* tree by community members** in Kalama, Nannapa and Narupa conservancies during the reporting period, in order to rehabilitate degraded rangelands for people and wildlife. **490 hectares were reseeded with perennial grasses.**
- » More than **1,000 casual labourers were engaged in the 14-day activity**, 40% of whom were women and more than 50% of whom were youth.
- » 62% of the budget (US\$ 132,180) went to direct payments to the casuals, who earned an average of US\$ 87.71 each, providing the much-needed household income.

## Strengthening Conservancy Governance

Output 1 - Well-governed community conservancies

Output 2 - Supportive Government policies, laws and finance

## Building Peace and Security

Output 3 - Effective peace-building between ethnic communities

Output 4 - Effective community policing in support of Government security agencies

## Livelihoods & Business

Output 5 - Equitable and responsive livelihood investments in conservancy communities

Output 6 - Successful enterprises and financial services for households, community groups, conservancies and NRT Trading policies, laws and finance

## Conserving Wildlife and Natural Resources

Output 7 - Sustainable rangelands management systems

Output 8 - Flagship species and habitat conservation programmes

Output 9 - Forest and marine ecosystem management systems

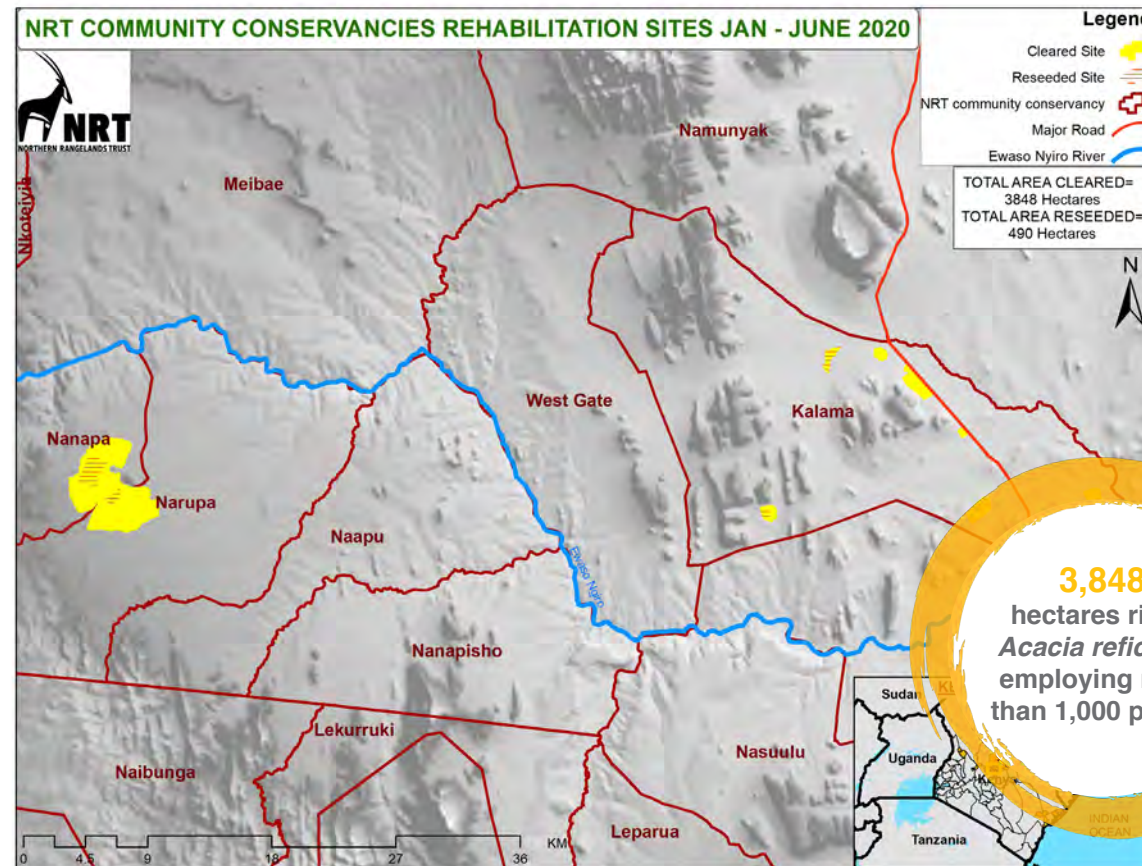
## Communications

## Partnerships

## Conservancy Sustainability

Conservancy	Hectare of <i>Acacia reficiens</i> managed	Hectares reseeded
Kalama	1,095	144
Nannapa	1,504	277
Narupa	1,249	69
<b>Total</b>	<b>3,848</b>	<b>490</b>

## Rangelands rehabilitation activities



**3,848**  
hectares rid of  
*Acacia reficiens*,  
employing more  
than 1,000 people



## Strengthening Conservancy Governance

Output 1 - Well-governed community conservancies

Output 2 - Supportive Government policies, laws and finance

## Building Peace and Security

Output 3 - Effective peace-building between ethnic communities

Output 4 - Effective community policing in support of Government security agencies

## Livelihoods & Business

Output 5 - Equitable and responsive livelihood investments in conservancy communities

Output 6 - Successful enterprises and financial services for households, community groups, conservancies and NRT Trading policies, laws and finance

## Conserving Wildlife and Natural Resources

Output 7 - Sustainable rangelands management systems

Output 8 - Flagship species and habitat conservation programmes

Output 9 - Forest and marine ecosystem management systems

## Communications

### Partnerships

### Conservancy Sustainability



## Rangelands Cartoons

The NRT rangelands team has developed a highly popular three-part cartoon series in English, Swahili and Maa. The cartoons look at how the north Kenya landscape has changed in recent years, and examine the causes and potential solutions. They are designed to trigger discussion amongst largely illiterate audiences, and are shown on laptops to herders, elders, women and children at rangelands meetings.

13 formal screenings took place this year in two conservancies; Westgate and Meibae. **1,289 people attended**, including 435 women and girls. The cartoons have been adapted for sharing on WhatsApp and social media, where they have reached thousands more.

### **Overheard at screenings:**

- » “Having heard and seen this cartoon, I am sure that after this bunching exercise I will be the champion of grazing in my community”
- » “I love conservation and I love these wildlife to an extent that when I see gazelles here around I see tourism and its benefits, I want to go and take care of them like I take care of my own livestock. I want to see many of them here every day.”
- » “The bull [one of the characters in the cartoons] talked sense that we men could not think about. He is a good orator than most of us and has a sense in what he speaks.”

## Strengthening Conservancy Governance

Output 1 - Well-governed community conservancies

Output 2 - Supportive Government policies, laws and finance

## Building Peace and Security

Output 3 - Effective peace-building between ethnic communities

Output 4 - Effective community policing in support of Government security agencies

## Livelihoods & Business

Output 5 - Equitable and responsive livelihood investments in conservancy communities

Output 6 - Successful enterprises and financial services for households, community groups, conservancies and NRT Trading policies, laws and finance

## Conserving Wildlife and Natural Resources

**Output 7 - Sustainable rangelands management systems**

Output 8 - Flagship species and habitat conservation programmes

Output 9 - Forest and marine ecosystem management systems

## Communications

## Partnerships

## Conservancy Sustainability

## Carbon

NRT began exploring the potential for the 'Northern Kenya Grassland Carbon Project' in 2010. This innovative and ambitious project has taken almost a decade to come to fruition, however, by the end of 2019 it had reached the final stage of approval. Validation of the first carbon credits are expected in July, after which sales will go live.

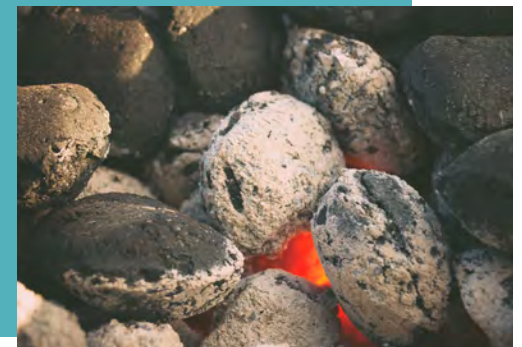
The project is based on member conservancies' rangeland management practices, and will provide an important incentive for better rangelands management in the long-term, and provide valuable alternative sources of income - helping to build the financial sustainability of the targeted conservancies. Partners in the project, Native Energy, anticipate that sales of the credits could generate over USD 200,000 by the end of 2020, and that the scheme could generate much larger sums per year from 2021 onwards.

Revenue sharing agreement with the 14 participating conservancies will be finalised in Q3, prior to the first carbon credit sales.

Validation of the next set of credits (2017 to 2020) will begin at the start of 2021.

## Charcoal Champions in Leparua

Community members in Leparua Community Conservancy are taking a stand on charcoal burning to protect their forested areas. Through their conservancy, many community members are now reporting incidents of charcoal burning to relevant actors. Two individuals recently caught making charcoal illegally have now turned over a new leaf, championing forest protection by raising awareness amongst their peers. One of them, a woman who has been a charcoal burner for the past 10 years, is now employed as a cook in the Conservancy. The other, a man who has burnt charcoal for the last 12 years, now runs an alternative business after the community helped him raise the capital he needed to switch his trade.





## Strengthening Conservancy Governance

Output 1 - Well-governed community conservancies

Output 2 - Supportive Government policies, laws and finance

## Building Peace and Security

Output 3 - Effective peace-building between ethnic communities

Output 4 - Effective community policing in support of Government security agencies

## Livelihoods & Business

Output 5 - Equitable and responsive livelihood investments in conservancy communities

Output 6 - Successful enterprises and financial services for households, community groups, conservancies and NRT Trading policies, laws and finance

## Conserving Wildlife and Natural Resources

Output 7 - Sustainable rangelands management systems

**Output 8 - Flagship species and habitat conservation programmes**

Output 9 - Forest and marine ecosystem management systems

## Communications

## Partnerships

## Conservancy Sustainability



4  
more Reteti  
orphans released  
into Sera, bringing  
the total number  
of 'rewilded' Reteti  
elephants to 10.

David Chancellor

## Output 8 - Flagship species and habitat conservation programmes

NRT has published its Status of Wildlife Report - which presents over 15 years of data from NRT member conservancies to build a landscape-wide assessment of their impact on wildlife.

### Key highlights of the report are:

- » Conservancies encompass critical range for more than eight globally endangered mammals.
- » Evidence of **increasing populations of elephant, reticulated giraffe, Grevy's zebra and Beisa oryx across the NRT-centre landscape**, largely due to the conservation work of NRT member community conservancies.
- » **Expansion of elephant range** and increased connectivity from Mt Kenya up to Marsabit due to security provided by conservancies.
- » **Reduced poaching** of elephants and turtles as a result of conservancy and NRT rangers anti-poaching efforts.
- » Well managed **core conservation areas provide critical refuge for large carnivores**, especially lions.
- » Community managed sanctuaries targeting endangered species have been successful in **contributing to the national recovery efforts of critically endangered hirola and black rhino**.

## Strengthening Conservancy Governance

Output 1 - Well-governed community conservancies

Output 2 - Supportive Government policies, laws and finance

## Building Peace and Security

Output 3 - Effective peace-building between ethnic communities

Output 4 - Effective community policing in support of Government security agencies

## Livelihoods & Business

Output 5 - Equitable and responsive livelihood investments in conservancy communities

Output 6 - Successful enterprises and financial services for households, community groups, conservancies and NRT Trading policies, laws and finance

## Conserving Wildlife and Natural Resources

Output 7 - Sustainable rangelands management systems

**Output 8 - Flagship species and habitat conservation programmes**

Output 9 - Forest and marine ecosystem management systems

## Communications

## Partnerships

## Conservancy Sustainability

- » **10 orphaned elephants from Reteti have been successfully introduced to Sera Rhino Sanctuary** for rewilding.
- » Buffalo are declining across much of the NRT landscape, and increased frequency of droughts coupled with degraded rangelands is likely the cause of this decline
- » Severely degraded rangelands are driving declines of wildlife in Meibae conservancy; and in Lekurruki, insecurity and incursions of large numbers of livestock into the conservation area are the likely cause of wildlife declines in this conservancy
- » **Human elephant conflict is increasing**; elephants cause more human deaths and injuries in conservancies than any other species and conflict killing of elephants is now one of the highest causes of death. Emphasis on mitigating elephant conflict will be an important part of NRT's wildlife strategy in the next five years.
- » [Read the full Status of Wildlife Report 2005 - 2019 here.](#)

## Elephants

- » **Zero incidents of ivory poaching inside NRT member conservancies during the reporting period.** There was one recorded incident in the landscape, and this occurred outside community conservancy boundaries.
- » The Proportion of Illegally Killed Elephants (PIKE) as at end of May stands at 37%, but this data needs to be harmonised with KWS which could affect the final figure. **Nine elephants were killed as a result of conflict with humans during the reporting period**, and this remains a significant challenge for conservancies.

### Stuck in the Mud - Bull Elephant Rescue

NRT staff, Nannapa Community Conservancy rangers, Loisaba Conservancy rangers, and the Kenya Wildlife Service worked together to rescue an elephant stuck in the mud in May. Herders spotted the 15-year-old bull in the mud and alerted Jackson Lekumoisa, Nanaapa Conservancy Manager, who in turn got the joint rescue mission going. It took many hands and many hours, but the elephant walked away from his ordeal unharmed. [It was all captured on Instagram.](#)





## Strengthening Conservancy Governance

Output 1 - Well-governed community conservancies

Output 2 - Supportive Government policies, laws and finance

## Building Peace and Security

Output 3 - Effective peace-building between ethnic communities

Output 4 - Effective community policing in support of Government security agencies

## Livelihoods & Business

Output 5 - Equitable and responsive livelihood investments in conservancy communities

Output 6 - Successful enterprises and financial services for households, community groups, conservancies and NRT Trading policies, laws and finance

## Conserving Wildlife and Natural Resources

Output 7 - Sustainable rangelands management systems

**Output 8 - Flagship species and habitat conservation programmes**

Output 9 - Forest and marine ecosystem management systems

## Communications

## Partnerships

## Conservancy Sustainability

## Koya's Story

A female elephant fitted with a GPS tracking collar has made a remarkable journey from Samburu to Marsabit - suggesting that elephants are starting to feel safe again. 'Koya' made the 48-mile trek with six of her family, traversing an area once troubled by conflict and ivory poaching. This is the first time a female elephant has ever been recorded making this trip.

With community conservancies working to provide secure spaces for wildlife and people, elephants are starting to expand their range once again. This is important; with the Samburu/Laikipia elephant population growing at approximately 2% per year, elephants need more safe spaces to feed, breed and move through in order to reduce pressure on areas in the southern part of the landscape. Here, human densities are high, and while ivory poaching is decreasing, human-elephant conflict is on the rise as competition for pasture and water intensifies. Koya's journey shows that community conservancies in Isiolo, Samburu and Marsabit are providing this vital space, and hold the potential for further expansion of elephant range. Her footprints also demonstrate that with peace, security and good conservation work, elephants once fragmented by the ivory crisis can and are re-connecting again.

**Zero**  
incidents of  
elephant poaching  
for ivory in the  
NRT landscape

## Reteti

- » Reteti made **seven rescues** during the reporting period, but one rescued calf sadly died shortly after arriving at Reteti.
- » Two notable rescues were Lomunyak and Long'uro. Lomunyak was saved from drowning in the Ewaso Nyiro River by hospitality staff in Samburu National Reserve. He was just 6-8-weeks old, and had injuries from what is thought to be a lion attack - his name means "Lucky" in Maa, and he is now recovering well at Reteti. The second notable rescue, Long'uro, was found critically injured in Loisaba Conservancy - after having lost a third of his trunk to a hyena. Vets from Kenya Wildlife Service supported the Reteti team in the rescue, where euthanasia was discussed as a likely option due to the severity of his injuries. However, Long'uro continues to make a remarkable recovery, and as his wounds heal he has developed a playful nature.

## Strengthening Conservancy Governance

Output 1 - Well-governed community conservancies

Output 2 - Supportive Government policies, laws and finance

## Building Peace and Security

Output 3 - Effective peace-building between ethnic communities

Output 4 - Effective community policing in support of Government security agencies

## Livelihoods & Business

Output 5 - Equitable and responsive livelihood investments in conservancy communities

Output 6 - Successful enterprises and financial services for households, community groups, conservancies and NRT Trading policies, laws and finance

## Conserving Wildlife and Natural Resources

Output 7 - Sustainable rangelands management systems

**Output 8 - Flagship species and habitat conservation programmes**

Output 9 - Forest and marine ecosystem management systems

## Communications

## Partnerships

## Conservancy Sustainability

- » **Four Reteti elephants - Bawa, Nadasoit, Lchurai, and Loisaba - started their journey back to the wild** in the reporting period, as they were released into the fenced Sera Rhino Sanctuary to join their six stablemates who were released last year. Keepers stayed in Sera with the orphans for several days as they adjusted to their new surroundings, then left once the orphans no longer wanted to return for their milk bottle. Through GPS tracking collars, they continued to be monitored by a dedicated monitoring team which includes staff from Save the Elephants and San Diego Zoo, as well as the Sera rangers. The newly released orphans very quickly met up with the other Reteti orphans - Shaba, Mpala, Pokot, Warges, Sosian and Lingwesi, who were released into Sera Rhino Sanctuary in 2019. Monitoring data shows the orphans are commonly found with wild elephants and particularly one wild collared female and her herd.

## **Rhinos**

**One black rhino calf was born** at the Sera Rhino Sanctuary during the reporting period, bringing the total number of calves born in the sanctuary to seven and the total population to 17. There have been no poaching incidents at the Sanctuary since inception.





## Strengthening Conservancy Governance

Output 1 - Well-governed community conservancies

Output 2 - Supportive Government policies, laws and finance

## Building Peace and Security

Output 3 - Effective peace-building between ethnic communities

Output 4 - Effective community policing in support of Government security agencies

## Livelihoods & Business

Output 5 - Equitable and responsive livelihood investments in conservancy communities

Output 6 - Successful enterprises and financial services for households, community groups, conservancies and NRT Trading policies, laws and finance

## Conserving Wildlife and Natural Resources

Output 7 - Sustainable rangelands management systems

**Output 8 - Flagship species and habitat conservation programmes**

Output 9 - Forest and marine ecosystem management systems

## Communications

## Partnerships

## Conservancy Sustainability

**15**  
**hirola calves**  
**born in**  
**Ishaqbini**  
**Sanctuary**

## **Giraffe**

Fence construction for the new 27 square km Ruko Giraffe Sanctuary on the shores of Lake Baringo has begun. The Sanctuary will provide a vital space for the seven Rothschild's giraffe in Ruko, who have been stranded on an island for several years after rising water levels in Lake Baringo cut off the mainland from their peninsula home. Ruko's long-term mission is to reintroduce free-ranging giraffe into their former range around Baringo. Approval from KWS has been granted to move the island giraffe to the mainland as soon as the Sanctuary is ready, and a management plan for the new sanctuary has been developed. Additional Rothschild giraffe will be translocated to the sanctuary once it is established.

## **Hirola**

- » Ishaqbini conservancy recorded **15 hirola births** inside the sanctuary during the reporting period, with seven more expectant mothers.
- » The total hirola population at the Sanctuary is estimated to be over 130 - a 160% increase in the numbers of the critically endangered hirola numbers since its establishment in 2012.
- » There have been no hirola deaths so far this year at the sanctuary.
- » Plans for expansion of the sanctuary are in the final stages following widespread community and county government engagement, this will almost double the size of the sanctuary which has reached its carrying capacity.

## **Other**

- » **Grevy's translocation:** 25 endangered Grevy's zebra were successfully translocated from Lewa Wildlife Conservancy to Sera Rhino Sanctuary in May. This is the first translocation of Grevy's zebra to a community protected area in Kenya, and highlights the critical lead role indigenous communities are taking in endangered species conservation. The move, the latest in a series of initiatives aimed at boosting biodiversity in East Africa's first and only community-run black rhino sanctuary, was a collaboration between the Sera community, NRT, KWS, Lewa Wildlife Conservancy, Grevy's Zebra Trust, TNC, USAID, DANIDA and many more. Sera Rhino Sanctuary already hosts 19 Grevy's zebra, and it is hoped the new additions will diversify the gene pool, lead to increased birth rates, and ultimately contribute to the long term conservation of the species.

## Strengthening Conservancy Governance

Output 1 - Well-governed community conservancies

Output 2 - Supportive Government policies, laws and finance

## Building Peace and Security

Output 3 - Effective peace-building between ethnic communities

Output 4 - Effective community policing in support of Government security agencies

## Livelihoods & Business

Output 5 - Equitable and responsive livelihood investments in conservancy communities

Output 6 - Successful enterprises and financial services for households, community groups, conservancies and NRT Trading policies, laws and finance

## Conserving Wildlife and Natural Resources

Output 7 - Sustainable rangelands management systems

Output 8 - Flagship species and habitat conservation programmes

**Output 9 - Forest and marine ecosystem management systems**

## Communications

## Partnerships

## Conservancy Sustainability

- » **Vaccination Campaign:** 211 domestic dogs and cats in the Reteti and Sarara valleys in Namunyak were vaccinated against rabies and canine distemper during the reporting period, benefitting more than 100 households as well as wildlife. The exercise was conducted under the guidance of the Samburu county government in partnership with NRT, Ewaso Lions, San Diego Zoo Global, Sarara Camp, Action for Cheetahs, and Animal Care Clinic, among others. The initiative commenced in January 2020 to prevent rabies, which kills 2,000 people a year in Kenya, and the spread of the viral disease canine distemper which led to the death of many African wild dogs in Samburu and Laikipia in recent times.

## Output 9 - Forest and marine ecosystem management systems

### Marine

- » Pate marine rangers sighted **64 sea turtles in the same location across two patrol days - the highest number of sea turtle sightings that Pate Marine Community Conservancy has ever recorded.** 23 turtles (17 adults and five juveniles) were recorded on day one, and 41 on day two.
- » Seven green sea turtle carcasses were recorded in Pate, and eight in Kiunga, during the reporting period. Cause of death natural or unknown.





## Strengthening Conservancy Governance

Output 1 - Well-governed community conservancies

Output 2 - Supportive Government policies, laws and finance

## Building Peace and Security

Output 3 - Effective peace-building between ethnic communities

Output 4 - Effective community policing in support of Government security agencies

## Livelihoods & Business

Output 5 - Equitable and responsive livelihood investments in conservancy communities

Output 6 - Successful enterprises and financial services for households, community groups, conservancies and NRT Trading policies, laws and finance

## Conserving Wildlife and Natural Resources

Output 7 - Sustainable rangelands management systems

Output 8 - Flagship species and habitat conservation programmes

**Output 9 - Forest and marine ecosystem management systems**

## Communications

## Partnerships

## Conservancy Sustainability



Roshmi Lodhia | TNC

- » Women groups in Kiunga Community Conservancy have collected about **nine tonnes of plastic waste from the surrounding beaches** in a clean-up campaign in June - supported by CLF.
- » The construction of a house for the plastic shredder was completed as part of Kiunga's plastic recycling center, using recycled plastic eco bricks made by community women. The shredder will be installed later this year and community members will receive training in plastic sorting, crushing and recycling.
- » 50 mangrove restoration expert groups have been established in Kiunga and Pate, with local communities and partners.
- » **33,563 mangroves were planted** in Pate Island, Kiunga, and Lower Tana Delta during the reporting period.
- » Nurseries holding 10,000 mangrove seedlings were established in Pate Island, Kiunga, and Lower Tana Delta.
- » A simple participatory mangrove monitoring tool has been drafted for the nurseries and restoration sites. Community mangrove restoration experts conduct regular monitoring and gapping of the planted sites, and to June they have recorded an 80% successful growth rate in nurseries and mangroves planted sites.
- » There is an **increase in the population of crabs** (an important commercial fishery) evidenced in most of the restored areas of Pate and Kiunga conservancies.

## Strengthening Conservancy Governance

Output 1 - Well-governed community conservancies

Output 2 - Supportive Government policies, laws and finance

## Building Peace and Security

Output 3 - Effective peace-building between ethnic communities

Output 4 - Effective community policing in support of Government security agencies

## Livelihoods & Business

Output 5 - Equitable and responsive livelihood investments in conservancy communities

Output 6 - Successful enterprises and financial services for households, community groups, conservancies and NRT Trading policies, laws and finance

## Conserving Wildlife and Natural Resources

Output 7 - Sustainable rangelands management systems

Output 8 - Flagship species and habitat conservation programmes

**Output 9 - Forest and marine ecosystem management systems**

## Communications

## Partnerships

## Conservancy Sustainability

- » 121 participants were involved in an eight day fisheries monitoring, control and surveillance training in Pate and Kiunga (four days in each conservancy). The objective was to increase partner collaboration on natural resources management and fishing regulations. In attendance at the training:
  - » 45 Beach Management Unit representatives
  - » 47 community members and NRT Coast staff
  - » 8 Lamu County Government representatives
  - » 8 staff from the Kenya fisheries, forest and wildlife services
  - » 2 representatives from the Directorate of Criminal Investigation
  - » 5 National Government representatives
  - » 5 National Police Service representatives
  - » 1 Kenya Navy representative

---

## Forests

### Replanting in Ngare Ndare

- » Over the reporting period, over **6,500 indigenous seedlings were planted around Ngare Ndare** slopes and riparian areas
- » **5,000 exotic tree seedlings were planted on farms** during the April rains, through the 1-for-1 programme (farmers buy a seedling, and get one free).
- » NNFT established **four new community tree nurseries** during the reporting period, at Manyagalo and Mbuju, bringing the total number of community tree nurseries to 17.





## Strengthening Conservancy Governance

Output 1 - Well-governed community conservancies

Output 2 - Supportive Government policies, laws and finance

## Building Peace and Security

Output 3 - Effective peace-building between ethnic communities

Output 4 - Effective community policing in support of Government security agencies

## Livelihoods & Business

Output 5 - Equitable and responsive livelihood investments in conservancy communities

Output 6 - Successful enterprises and financial services for households, community groups, conservancies and NRT Trading policies, laws and finance

## Conserving Wildlife and Natural Resources

Output 7 - Sustainable rangelands management systems

Output 8 - Flagship species and habitat conservation programmes

Output 9 - Forest and marine ecosystem management systems

## **Communications**

### Partnerships

### Conservancy Sustainability

# Communications

## Communications during COVID

To ensure consistent and appropriate internal and external communications during COVID, NRT focused on six key areas:

- » **The basics:** tracked credible sources in real-time to ensure up to date communique.
- » **Internal communications:** developed infographics and guidelines on coronavirus and safety precautions, shared tips on working effectively from home, conducting good virtual meetings, and maximising social tools such as WhatsApp.
- » **Early and frequent communications:** Launched weekly all staff virtual meetings to stay connected and updated, share advice and words of encouragement. Launched a weekly NRT news bulletin for key donors, partners and all staff.
- » **Media coverage:** Pitched stories to the media and delivered graphic, data and copy content to support media stories. Collaborated with partners for print media stories (KWCA, TNC - opinion piece on community led conservation. Save the Elephants - Koya's journey).
- » **Radio power:** Supported the transmission of daily radio lessons for children at home, championed a gender-campaign to promote the role of women in leadership.
- » **Website:** Repurposed existing content to increase the mileage of great stories from the NRT landscape. Shared information on COVID. Amplified partner content.

## Press

- » From January to June 2020 NRT has appeared in **Kenyan and International press 45 times** - 10 of which were international.
- » 24 of these appearances, mentions or features were positive, 18 were neutral mentions (where NRT partnered with the leading organisation for a project, for example) and 1 was negative.
- » All of the neutral mentions related to two stories; NRT support to the locust invasions, and the killing of Ishaqbini's two white giraffes.
- » NRT also published two opinion editorials in national newspapers, and appeared on two high profile blogs - Paul G Allen and NASA.

## Strengthening Conservancy Governance

Output 1 - Well-governed community conservancies

Output 2 - Supportive Government policies, laws and finance

## Building Peace and Security

Output 3 - Effective peace-building between ethnic communities

Output 4 - Effective community policing in support of Government security agencies

## Livelihoods & Business

Output 5 - Equitable and responsive livelihood investments in conservancy communities

Output 6 - Successful enterprises and financial services for households, community groups, conservancies and NRT Trading policies, laws and finance

## Conserving Wildlife and Natural Resources

Output 7 - Sustainable rangelands management systems

Output 8 - Flagship species and habitat conservation programmes

Output 9 - Forest and marine ecosystem management systems

## Communications

### **Partnerships**

## Conservancy Sustainability

- » NRT's Facebook following stands at 68,295, most of whom are Kenyan or in Kenya.
- » NRT's Instagram following stands at 59,200, most of whom are Kenyan or in Kenya.

The NRT Communications team are also leading a rebranding exercise, which aims to refresh NRT's visual identity and upgrade existing office templates. A team of 'rebranding champions' has been assembled from various departments to help provide insights and feedback, and support the roll out.

## Partnerships

---

### EU Consortium Programme Launched in West Pokot

The EU Ustahimilivu Programme, based in West Pokot County, is now fully operational. The main objective of the Ustahimilivu Programme is to support increased drought and climate change resilience in communities in the ASAL areas of Kenya. Specifically, to enhance food and nutrition security of vulnerable households, especially women and children, and to generate sustainable livelihoods and protect productive assets in West Pokot. It is a partnership between NRT, CEFA (agriculture and water provision), AMREF (health, hygiene and nutrition) E4IMPACT (enterprise and value chain development) and SOMINIREC (peace building and conflict management).

---

### IMARA Programme Internships

The Integrated Management of Natural Resources for Resilience in the ASALs (IMARA), is a three year partnership program (2018-2021) that aims to increase resilience of marginalised households to climate-change-related shocks through diversified livelihoods and improved natural resource management and use in Isiolo, Laikipia, Marsabit and Samburu. IMARA consortium is led by World Vision Kenya which has partnered with Northern Rangelands Trust and Stockholm Environment Institute, and it is funded by The Government of Sweden. During the reporting period, 15 interns from across ten NRT member community conservancies have been granted an internship opportunity at NRT Trading under the NRT/IMARA internship program. During the six-month internship programme, the youth will also be trained on life skills, entrepreneurship, and financial literacy to build their capacity to support community businesses.



## Strengthening Conservancy Governance

Output 1 - Well-governed community conservancies

Output 2 - Supportive Government policies, laws and finance

## Building Peace and Security

Output 3 - Effective peace-building between ethnic communities

Output 4 - Effective community policing in support of Government security agencies

## Livelihoods & Business

Output 5 - Equitable and responsive livelihood investments in conservancy communities

Output 6 - Successful enterprises and financial services for households, community groups, conservancies and NRT Trading policies, laws and finance

## Conserving Wildlife and Natural Resources

Output 7 - Sustainable rangelands management systems

Output 8 - Flagship species and habitat conservation programmes

Output 9 - Forest and marine ecosystem management systems

## Communications

## Partnerships

## **Conservancy Sustainability**

# Conservancy Sustainability

In the first half of the year NRT has continued work to develop a Conservancy Development Assessment Framework to assess the strength of governance, management and financial self-reliance for all member conservancies. The tool is being developed in conjunction with eight pilot conservancies, alongside technical expertise from highly valued donor partner, Fauna & Flora International (FFI). The tool will inform focused investment in capacity building in conservancies to ensure efficiencies and effectiveness in the community conservancy model and ensure all conservancies are working towards self-reliance and a sustainable future.

The work is highlighting additional resources that NRT can provide to conservancies. For example, over the next quarter, NRT will develop a 'train the trainer' module to continue the Leadership and Management Programme (LAMP) training for those conservancies who are more experienced and more mature to ensure that skills and knowledge are retained within conservancies for their future.

Further, business plans are being developed for specific conservancies with support from TNC and Conservation International. NRT is also exploring a new partnership with IUCN to enable conservancies to apply for 'Green List' status. The IUCN Green List of Protected and Conserved Areas is the first global standard of best practice for protected area based conservation and would provide well-recognised certification for conservancies that are showing effective management and fair governance.

# ASANTENI SANA



**USAID**  
FROM THE AMERICAN PEOPLE



**EMBASSY OF DENMARK**  
*Danida*



Baringo County Government



Garissa County Government



Isiolo County Government



EUROPEAN UNION



EMBASSY OF SWEDEN



AGENCE FRANÇAISE DE DÉVELOPPEMENT



SAN DIEGO ZOO GLOBAL



FAUNA & FLORA INTERNATIONAL



**Tusk**  
www.tusk.org



FONDS FRANÇAIS POUR L'ENVIRONNEMENT MONDIAL



**ICEP**  
weltweit mehr unternehmen



RAINFORREST TRUST



IUCN



Running Wild  
Safaricom marathon



Saint Louis Zoo  
Animals Always



Laikipia County Government



Lamu County Government



Marsabit County Government



DEPARTMENT OF STATE  
UNITED STATES OF AMERICA



FEDERAL RESERVE BANK OF NEW YORK  
INCORPORATED MAY 18, 1914



CONSERVATION INTERNATIONAL



RHINO ARK



SPACE FOR GIANTS  
www.spaceforgiants.org

Hawksford



Meru County Government



Samburu County Government



County Government of TANA RIVER



MARCH TO THE TOP  
AFRICA



FOREST SERVICE  
U.S. DEPARTMENT OF AGRICULTURE



SAVE THE ELEPHANTS



INTERNATIONAL ELEPHANT FOUNDATION.ORG



NATIONAL GEOGRAPHIC



ZOO



lucille foundation



SIDEKICK FOUNDATION



Implemented by GIZ



OKLAHOMA CITY ZOO  
BOTANICAL GARDEN + AQUARIUM



Excellent



West Pokot County Government



TARONGA ZOO



ROYAL AFRICAN SAFARIS



WWF



Kenya Wildlife Conservancies Association  
Living. Native. Loving. People.



LEWA WILDLIFE CONSERVANCY  
A UNESCO World Heritage Site inscribed in 2013



KENYA WILDLIFE SERVICE