



Education Strategy

2024-2028

A combination of different factors hinders access to formal education in Northern and Coastal Kenya for all children



Arid & semi-arid lands with a harsh climate and lack of water



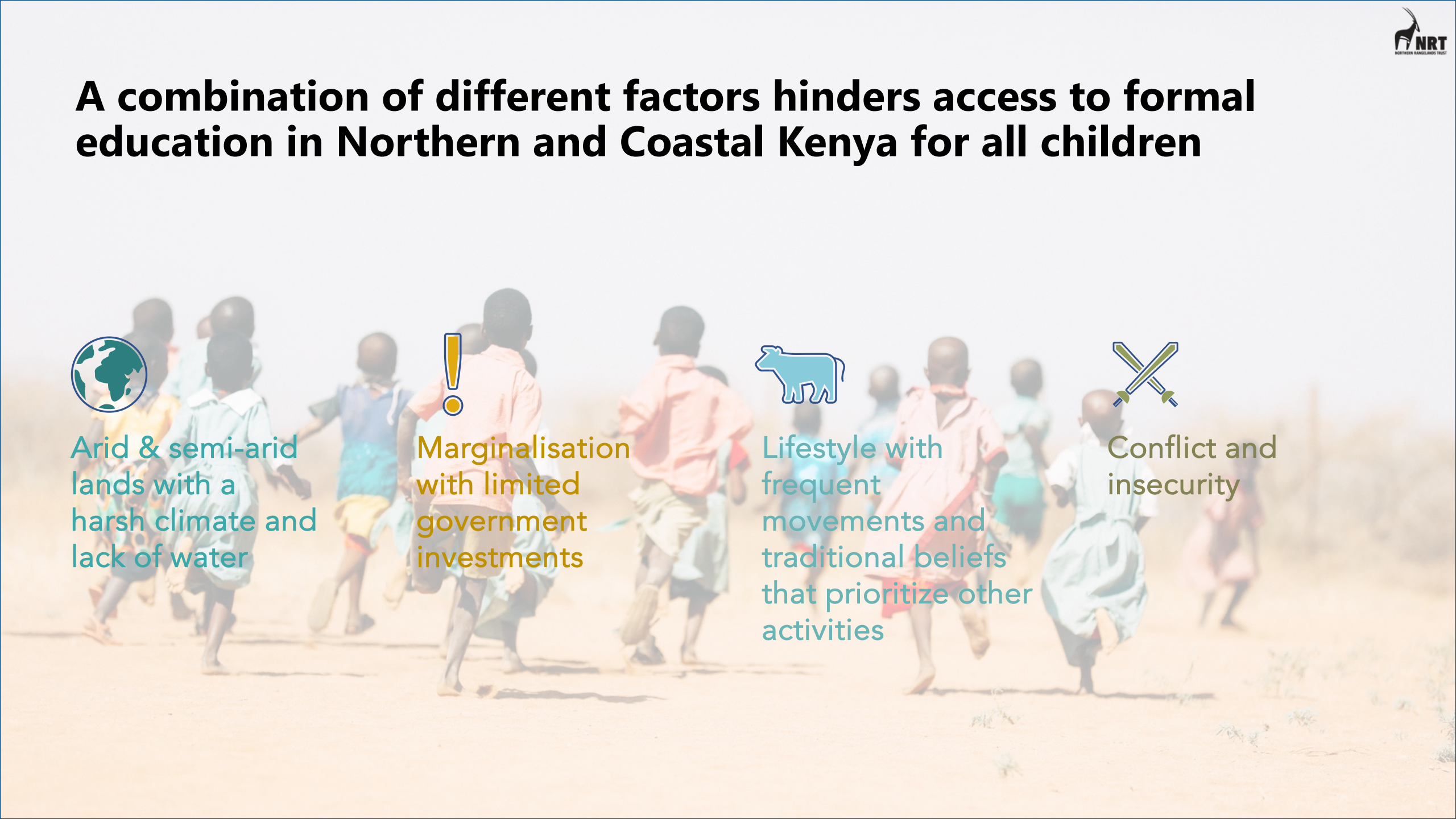
Marginalisation with limited government investments



Lifestyle with frequent movements and traditional beliefs that prioritize other activities

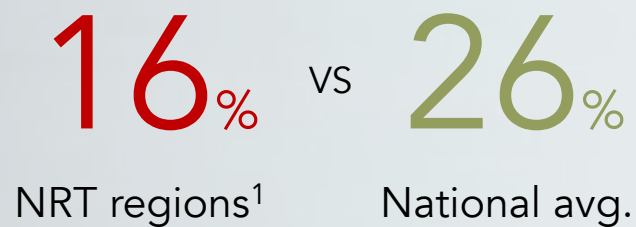


Conflict and insecurity

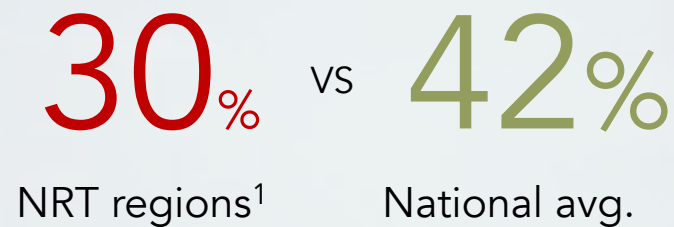


This results in low levels of education across the landscape

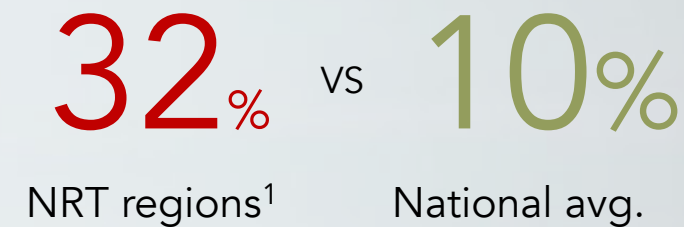
School completion rate



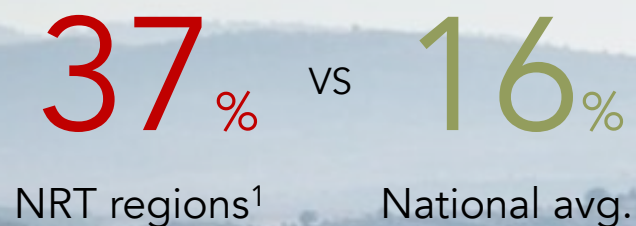
Net Enrolment Secondary education



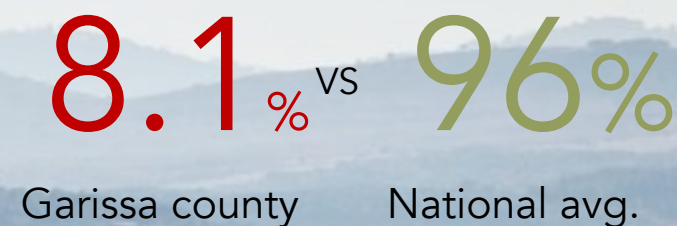
Out-of-school rate for children aged 6-13



Have never been to school



Literacy levels





Addressing lack of education is now more crucial than ever

The capacity of the rangelands to sustain traditional pastoralism is decreasing as increased droughts and population growth are putting pressure on the natural resources. There is increasing awareness amongst the youth that they need to seek alternative livelihoods, for which they need education and vocational skills.

Access to high-quality education will support in:

- Empowerment and economic development
- Health and wellbeing
- Reduced inequality, including gender
- Environmental stewardship
- Climate resilience and adaptation

Education is a key priority nationally and internationally



- The **United Nations Sustainable Development Goals**
- **UNESCO's Education for All (EFA)**



- **Kenya Constitution (2010)**
- **Competency Based Curriculum (CBC)**

- **Kenya's 'Vision 2030'**



Our endeavours so far

We believe community conservancies are best placed to create resilient communities and ecosystems by implementing programs that improve livelihoods, peace, and natural resources.

We realized that **education is one of the most important and impactful change agents**, and to be better able to support these programs, we set up an education department.

Over the past two years, NRT has laid the foundations for our educational endeavours by focusing on two aspects:

- **Understanding the needs in the environment by piloting several projects**
- **Building our team**

Our impact so far

- **2,087** children in 23 schools in the **Mentorship Program**
- **7 teacher housing** blocks and **7 information sessions** for parents and students and **4 capacity building** sessions for teachers
- **1,179** parents in 7 schools engaged
- **+467** students improved enrolment rate from 2021-2023
- **XX** bursaries

In the new Strategic Period 2024-2028, NRT is doubling down on Education as priority

"Everything starts with education. Our single most important target as NRT is for everyone to receive 12 years of education by 2050."

- Julius Kipng'etich,
Chairman of the Board, NRT



NRT Education Programme: Strategic Framework 2024-2028

Overall target: to increase **net enrolment rate of both boys and girls by 20% in 40 schools** across the landscape.

BUILDING BLOCK I

Stakeholder engagement & partnerships

Stakeholder mapping, forums with counties, national government, NGOs, parents, school management committees, local leaders, and students.

BUILDING BLOCK II

Infrastructural Support

Classrooms, dormitories, and teacher housing. Teacher housing, in particular, has received little to no attention.

BUILDING BLOCK III

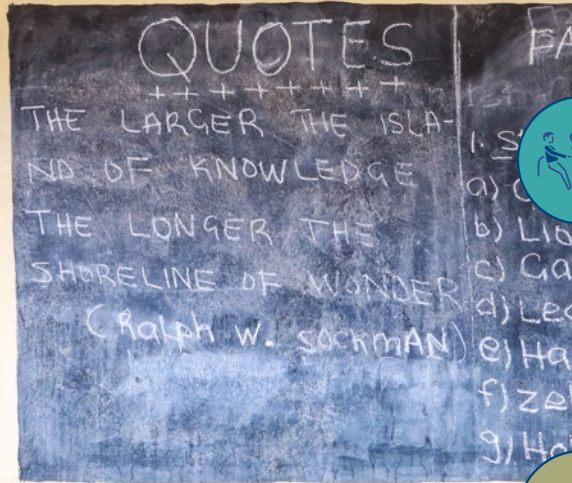
Mentorship program

Overcoming challenges affecting schooling (especially for girls)

BUILDING BLOCK IV

**Any additional
programs based on
needs**

How will we **achieve** this?



We work together with **partners**

Partner with the Lewa Education Program and conduct a stakeholder mapping for all participating schools to understand the role of other players and the potential for partnerships (e.g., MasterCard, M-PESA, Visa)



We focus on **quality** instead of quantity

We guarantee continued support to schools through our governance structure. We start with a limited number of schools to pilot our program focus on infrastructure projects (mainly teacher housing) before we move on to additional initiatives to increase net enrolment rates. Once our model is proven, we roll out to the wider environment, aspiring to impact 100 schools by 2030.



We offer our programme to **proactive, motivated CCYs**

We expect our members to proactively reach out and express their interests. Given the limited capacity, we will focus our support on CCYs who have proven to be well-governed for a number of consecutive years



NRT Education Programme: Our roadmap for each school

Over the upcoming 5-year period, we aim to progressively expand our reach to provide long-term support to 40 schools by 2028. When we add a school to our program, we commit to working together with them on a structural basis to improve their net enrolment rates.

STEP 1. ENGAGEMENT WITH COMMUNITY CONSERVANCIES

STEP 2. STAKEHOLDER ENGAGEMENT AND INFORMATION SESSIONS

STEP 3. SCHOOL NEEDS ASSESSMENT AND BASELINE INDICATORS

STEP 4. ROLL OUT PROGRAMS

STEP 5. MONITORING AND EVALUATION

Proposed budget

Operations NRT

Ksh. 50 million (\$68K USD)

This covers all operating costs for 5 years for the NRT education department, including staff costs, vehicle costs, M&E, comms, etc.

+

Engagement per school

Ksh. 20 million (\$136K USD)

This covers all costs to support one school for 5 years, including annual budget for stakeholder engagement and mentorship, food, accommodation, reimbursements for mentors, and the average costs of one infrastructural project

Total costs

Ksh. 850 million (\$5.8M USD)

This covers all operational costs for 5 years and engagement with 40 schools

Annual costs

Ksh. 170 million (\$1.2M USD)

This covers all operational costs for 1 year and engagement with 8 schools



ASANTENI SANA